



Office - 6.3.20 Release

[Enhancements](#)

[Mobile POS](#)

[Mobile Ordering](#)

[CMA](#)

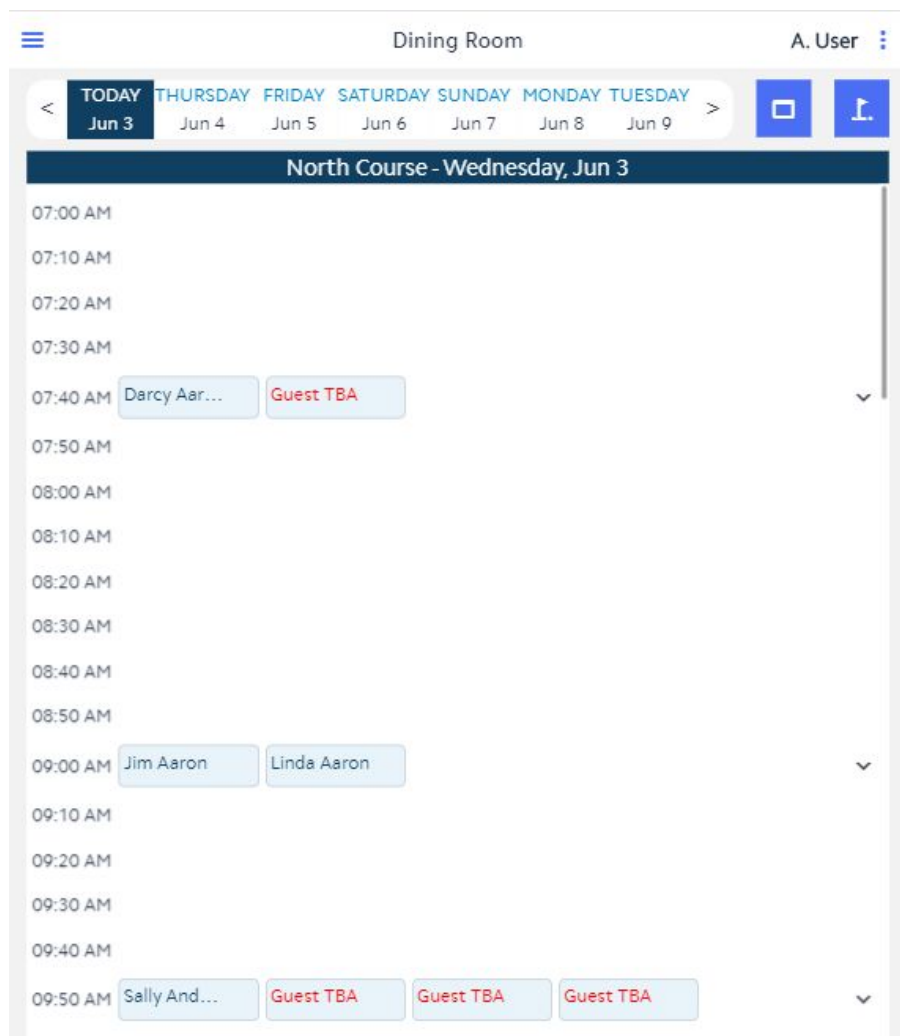
[Bug Fixes](#)

Enhancements

Mobile POS

- **Read-Only Tee Sheet Capability for F&B Mobile POS Devices**

Use Case: F&B Areas can now be configured to show a read-only version of the Tee Sheet. This provides a quick look at upcoming Tee Times, and gives F&B staff a way to see which members may be wrapping up their rounds.




Note: This functionality is controlled by the “Show Tee Time as Read-Only in POS” Setting within Areas > POS Options.

- **Kiosk Screen Group in Mobile POS**

Use Case: Users can now designate a Screen Group to populate in Mobile POS when using the member facing Kiosk mode for Area Check In's. This enables members to add additional items to their check in ticket.

✕ Fitness Kiosk, Quick Ticket
Server: A. User



6333 - Aaron, Henry
↕

Member Check In x 1	\$5.00
Single Class x 1	\$16.00
Candy Bar x 1	\$2.00
Add Gratuity	⊕
Subtotal	\$23.00

Pay

All Items

Single Class

\$16.00
⊖

WORKOUT CHECK-
IN

\$0.00
⊖

\$
Swedish Massage 1
Hour

\$90.00
⊕

10 Class Series

\$150.00
⊕

20 Class Series

\$280.00
⊖

Beverage

13 items
→

30 Class Series

\$390.00
⊕

Lessons

8 items
→

40 Class Series

\$480.00
⊖

50 Class Series

\$550.00
⊖


Note: Configuration for this functionality is set at the POS > Terminals level. Please contact support for assistance in configuring this setup.

The screenshot shows a configuration window for 'POS Terminal 7'. The window title bar includes 'Home', 'POS Terminal 7', and a close button. Below the title bar are icons for save, print, delete, settings, and help. The main configuration area includes fields for ID (POS Terminal 7), Description (Fitness POS), Area (Fitness Kiosk), and Blackboard ID (3). A section titled 'Point Of Sale Options' contains several settings: Timeout (0), POS Grid Font Size (0), and a list of checkboxes. The 'Enable Kiosk Mode' checkbox is checked and highlighted with a red box. Below this section are dropdown menus for Ticket Employee (None), Member Charge Payment Type (None), Credit Card Payment Type (CE PAY Test TBT), and Screengroup (Fitness New), with the last one also highlighted by a red box.

- **CE Payments Credit Card Settlement for Kiosk Check In**

Use Case: Along with the ability to add items to a Kiosk Check In, Clubs can now give their Members the option to pay by Credit Card using CE Payments, when finalizing a check in.

× Fitness Kiosk, Quick Ticket
Server: A. User

 6340 - Aaron, Henry

Member Check In x 1 \$5.00

Add Gratuity (+)

Subtotal \$5.00

Pay

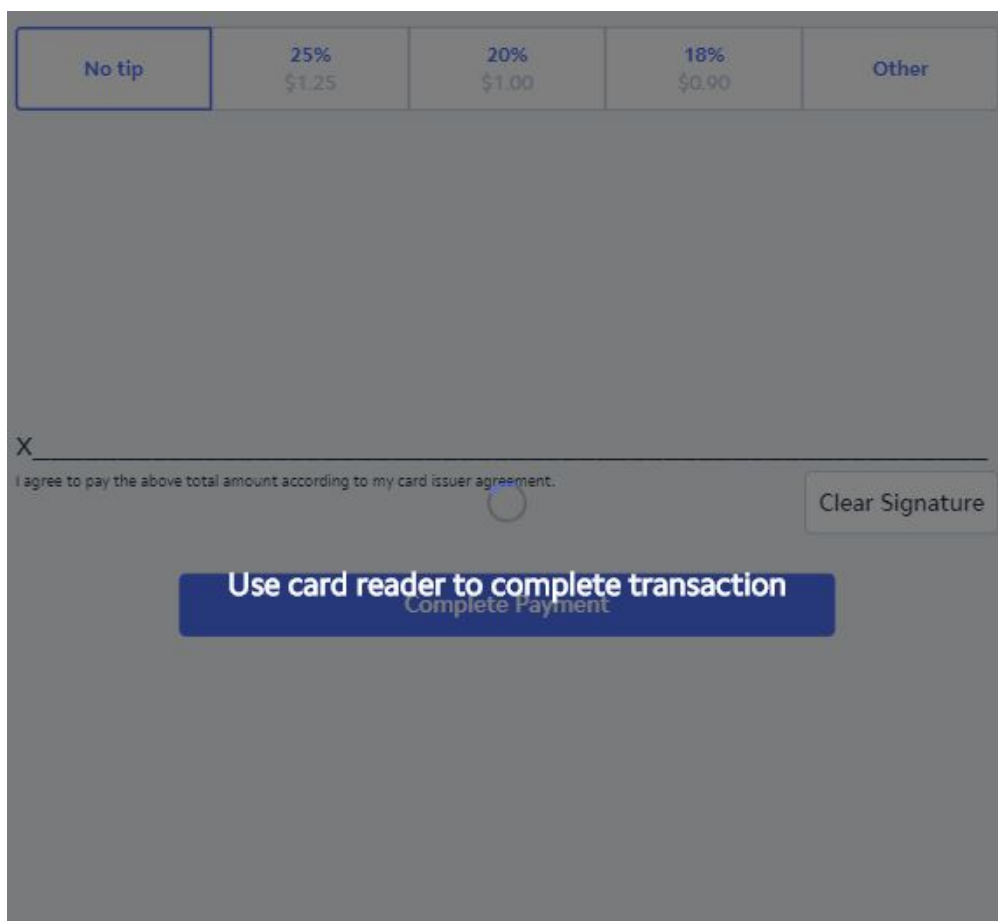
All Items

- Single Class \$16.00
- WORKOUT CHECK-IN \$0.00
- Swedish Massage 1 Hour
- 10 Class Series
- 30 Class Series \$390.00
- Lessons 8 items
- 40 Class Series \$480.00
- 50 Class Series \$550.00

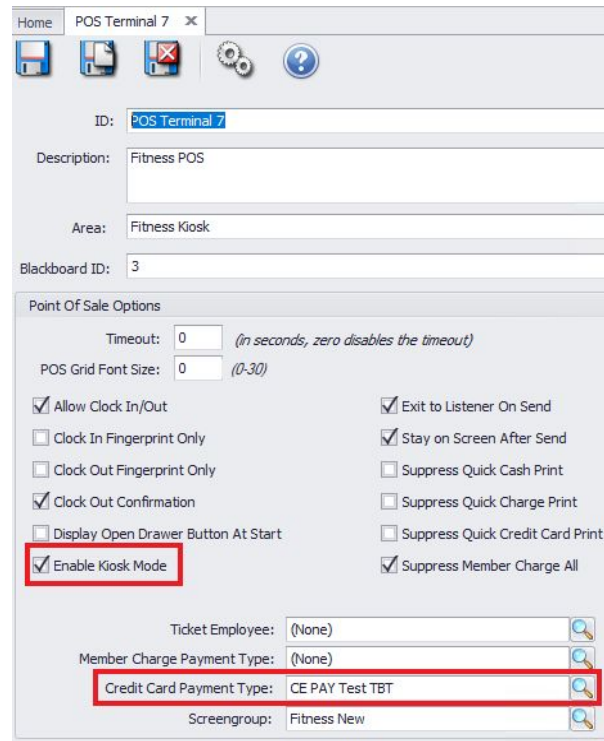
Close Select Payment Method

Member Charge

Credit Card



Note: Configuration for this functionality is set at the POS > Terminals level. Please contact support for assistance in configuring this setup.

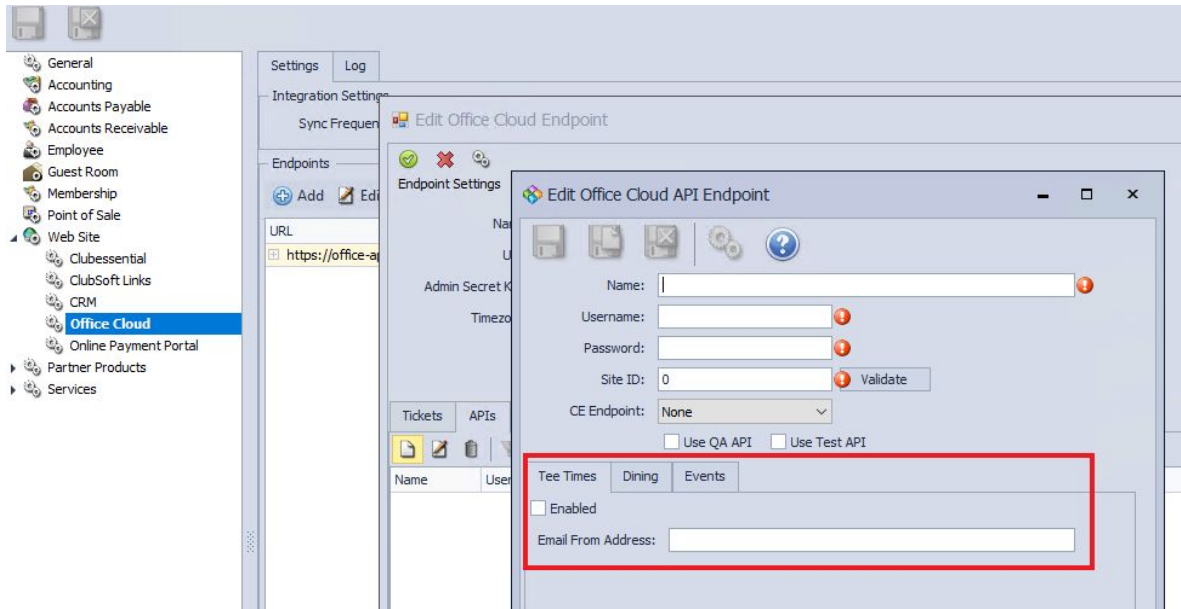


- **Return to Mobile Ordering Tab after Editing Mobile Ordering Tickets**

Use Case: Previously, after either settling a Mobile Ordering ticket in Mobile POS, or editing the ticket, the user would be returned back to the “Open Tickets” tab, rather than Mobile Ordering. The system will now return the user back to the Mobile Ordering tab, so that they can quickly open and edit other Mobile Orders.

- **Tee Times Send From Email Address**

Use Case: Users can now define a specific "send from" email address for Mobile POS Tee Time Check In confirmations. Previously, the email would always come from the address defined within System Settings > General > Email Settings.



Mobile Ordering

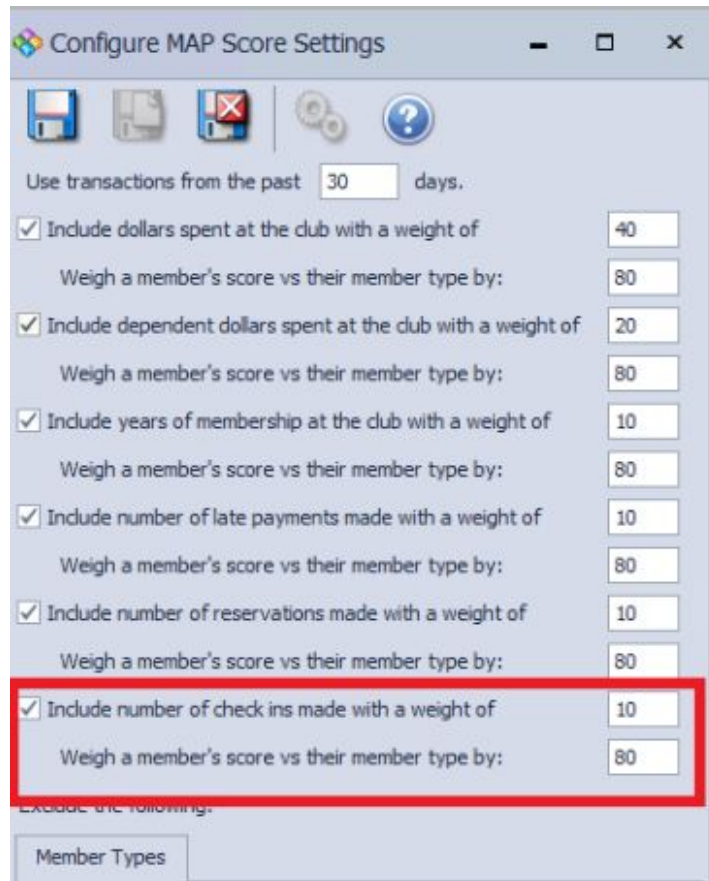
- **Item Modifier Countdown Support**

Use Case: When an Item has been added to a Modifier Group, and that item has been configured for countdown in Mobile POS, the system will automatically increment the Item's countdown when ordered via Mobile Ordering.

CMA

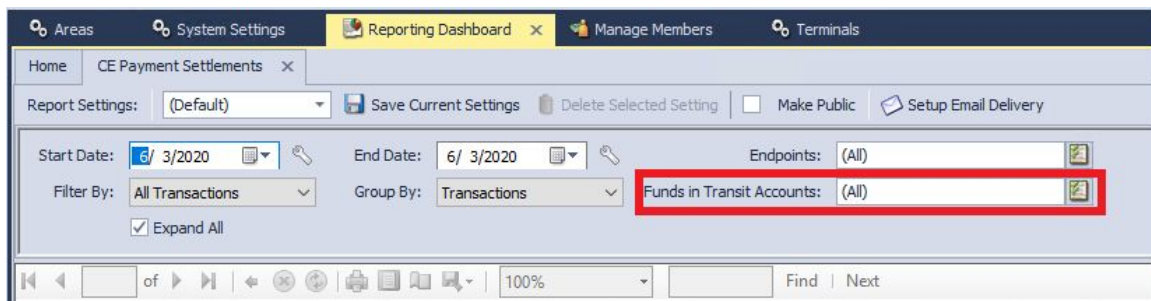
- **MAP - Add Member Check In Factor**

Use Case: Users now have the ability to add Member Check In's as a factor when the system calculates a Member's MAP Score. This can better assist the MAP tool and club admins in identifying engaged members.



- **CE Payments Settlement Report - Filter by Funds in Transit Account**

Use Case: The CE Payments Settlement Report can now be filtered by Funds in Transit G/L account. This can be useful for multi-location clubs with multiple CE Payments tokens configured.



- **Member Payment Activity Report - Cash Receipt Filter**

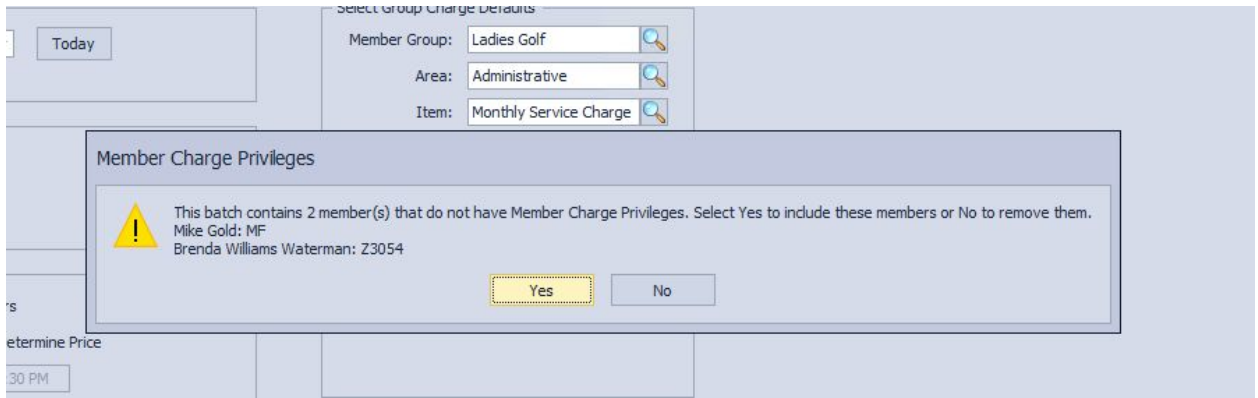
Use Case: A Cash Receipt filter has been added to the Member Payment Activity Report. This enables users to quickly identify which members have submitted an online payment within the defined date range. Users can also utilize this report to populate a dynamic group, which can then be used to email members who have not yet submitted an online payment, inviting them to do so.

The screenshot shows the 'Member Payment Activity' report interface. The 'CR Types' filter is highlighted with a red box and set to 'PayCloud CC, PayC'. Below the filters, the report title is 'Member Payment Activity Report' with a date range from 9/1/2019 to 2/1/2020. The 'Cash Receipt Type' is set to 'PayCloud ACH, PayCloud CC'. A table lists members with their IDs, names, and payment amounts.

Member #	Member Name	Amount
F3	Compton, Glenn	\$4,328.34
M8	Coll, David	\$3,419.37
E37	Mccarthy, Phyllis	\$928.09
F38	Langley, Barbara	\$2,587.50
G89	Bradbury, John	\$574.36
I301	Martinez, John	\$2,493.31
M63	Marie, Walter	\$4,878.10

- **Member Charge Wizard - Override Ability**

Use Case: When charging by Member Group in the Member Charge Wizard, users can now override the 'Do Not Allow Member Charge Privileges' Status setting, if desired. Club admins may want to override this setting for billing purposes, while still preventing those Members from Member Charging at the POS.



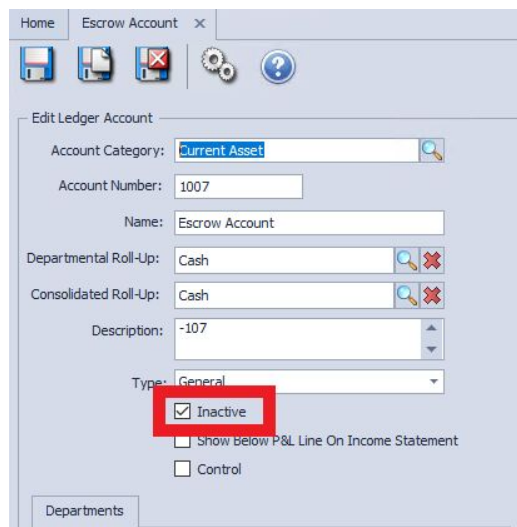
- **AP - Quick Check Improvement**

Use Case: Changes were made to the AP Quick Check tool in order to prevent a user from entering a date in an invalid format.

- **General Ledger - Accounts Grid**

Use Case: The "Restricted" column on the G/L Accounts grid has been updated to "Inactive", to accurately reflect the Account setting name.

Account Number	Name	Ledger Category	Inactive	Rollup Name	Ledger Type Name
1000	Operating Account	Current Asset	<input checked="" type="checkbox"/>	Cash	Asset
1001	New Operating Account	Current Asset	<input type="checkbox"/>	Cash	Asset
1002	CE Payments Funds in Transit	Current Asset	<input type="checkbox"/>	Cash	Asset
1005	Petty Cash - Office	Current Asset	<input type="checkbox"/>	Cash	Asset
1006	Petty Cash - F&B	Current Asset	<input type="checkbox"/>	Cash	Asset
1007	Escrow Account	Current Asset	<input checked="" type="checkbox"/>	Cash	Asset
1010	Janney Investment Account	Current Asset	<input type="checkbox"/>	Cash	Asset



- **Approve Charge Batches - Mobile POS Batch Rendering**

Use Case: Improved the speed of SJ batch preview rendering for Mobile POS batches in CMA. After double clicking on a Mobile POS charge batch to preview/post, the system will load the batch preview faster.

Bug Fixes

- Fixed a Mobile Ordering Issue where users could not place Future Orders on iOS devices
- Removed the return to inventory prompt when returning an Item in Classic POS, to prevent the system from improperly returning Items to inventory (All selected items will now be returned to inventory)
- Fixed an issue where Price Schedules were not applying properly to Tee Time tickets in Mobile POS